



Napa Junction

West Side Connector Draft Alternatives

Circulation Element Advisory Committee
March 24, 2021

Wellands Edge Rd
Redhead St
Rio Grande
Goldrahe Blvd
Castro St
Wellands Edge Rd
Rio Grande
Castro St
Wellands Edge Rd
Rio Grande
Castro St

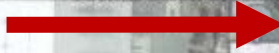
Workshop Purpose

- 3 potential “West Side Connector” Alternatives were prepared for the Committee’s review and comment.
- The Alternatives evaluation include criteria that address City Council guidance, neighborhood compatibility, and engineering design standards.
- The slideshow explains the Alternatives and the scoring rationale.
- We’re looking forward to your thoughts and committee recommendations!





Start Here



Today

1. Must use Broadway to connect between Devlin Road/GI Road intersection and Midpoint Eucalyptus Drive.

2. A meandering Class 1 Bike Lane prohibits Motor Vehicles between Commerce Ct and Wetlands Edge Court.

Commerce Ct

Meandering Class 1 Bike Lane

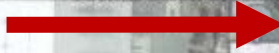
Wetlands Edge Ct

End Here





Start Here



Today

1. Must use Broadway to connect between Devlin Road/GI Road intersection and Midpoint Eucalyptus Drive.

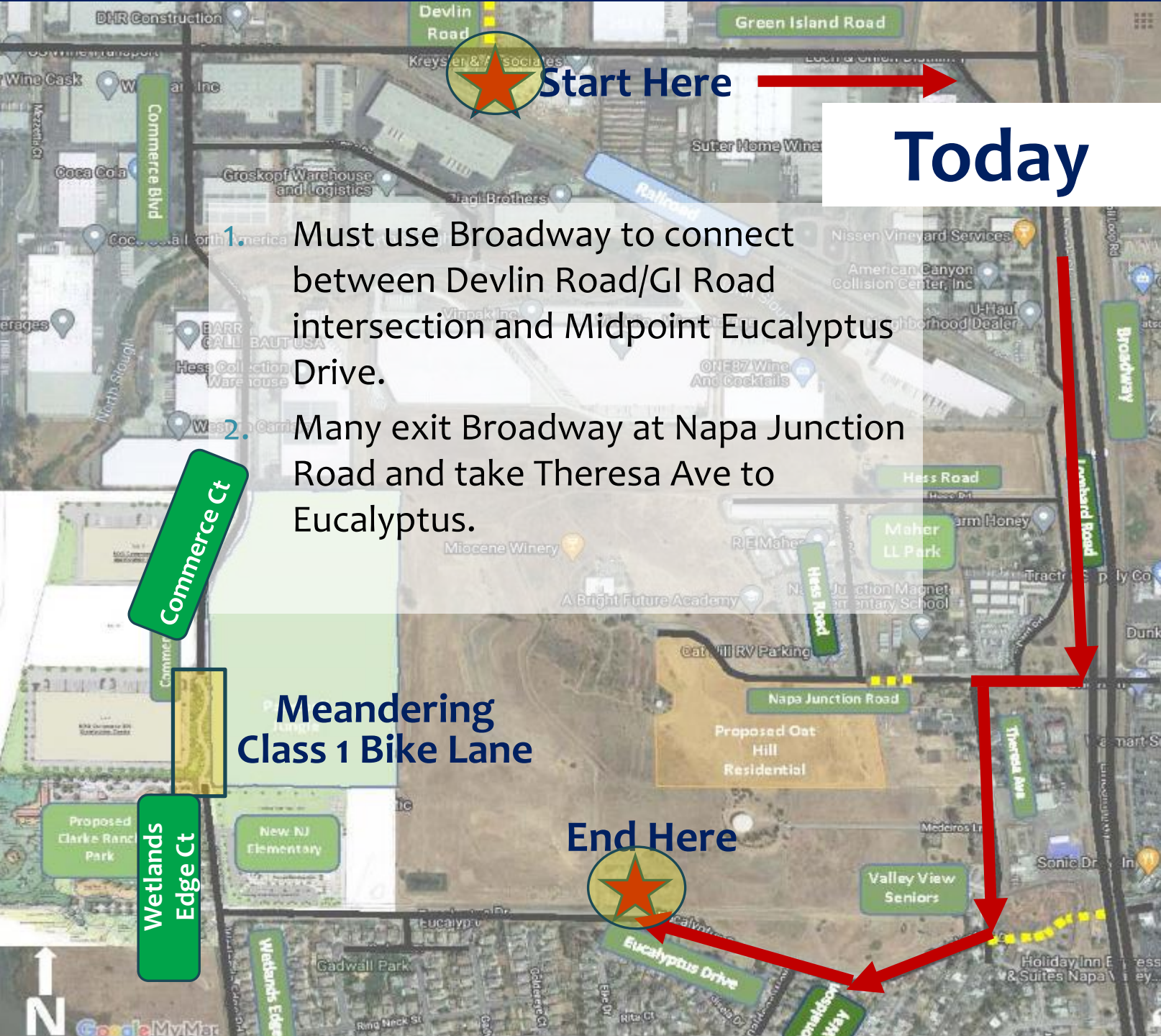
2. Many exit Broadway at Napa Junction Road and take Theresa Ave to Eucalyptus.

Commerce Ct

Meandering Class 1 Bike Lane

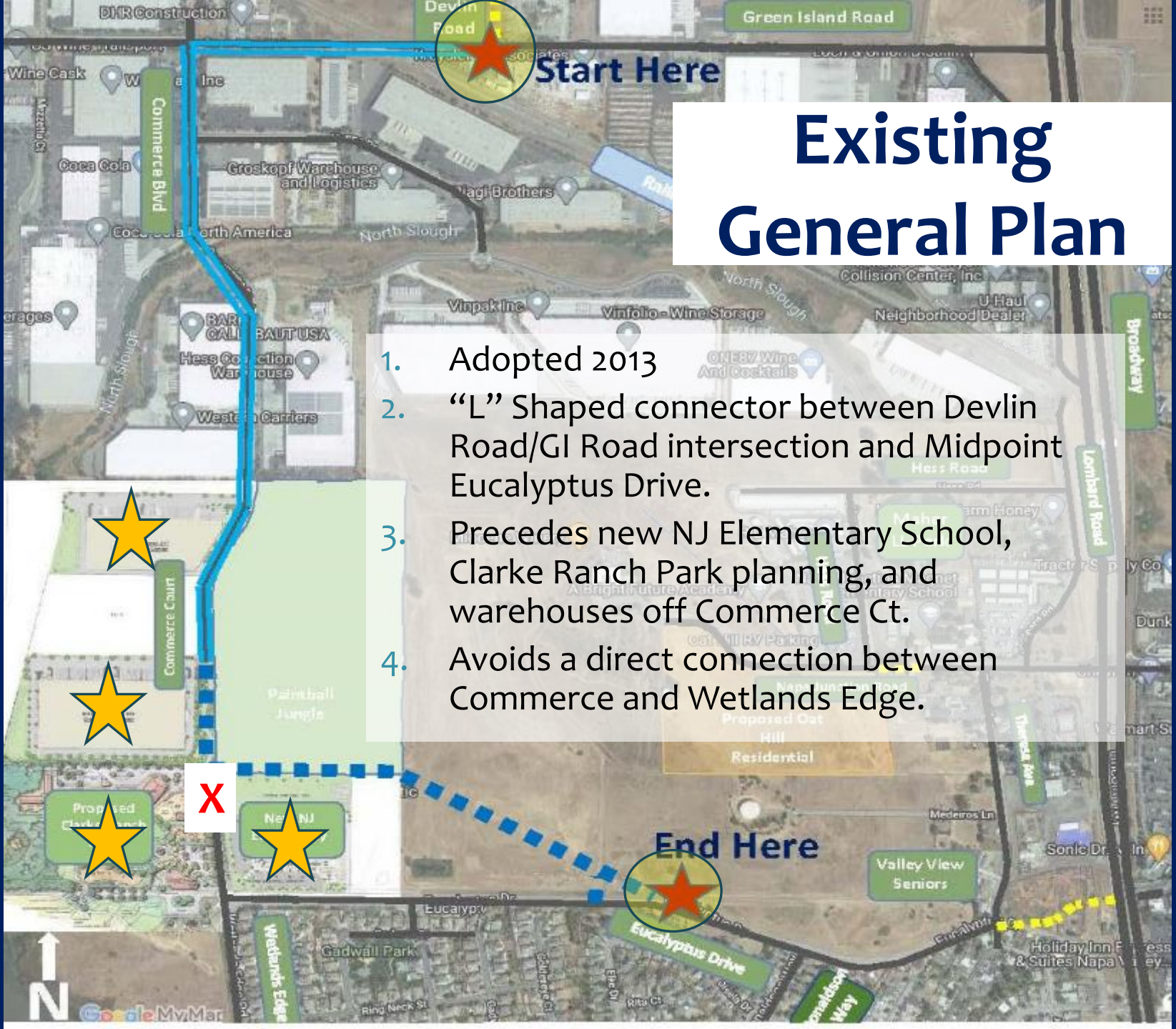
Wetlands Edge Ct

End Here



Existing General Plan

1. Adopted 2013
2. "L" Shaped connector between Devlin Road/GI Road intersection and Midpoint Eucalyptus Drive.
3. Precedes new NJ Elementary School, Clarke Ranch Park planning, and warehouses off Commerce Ct.
4. Avoids a direct connection between Commerce and Wetlands Edge.





West Side Connector Criteria

Listed in order of Priority:

1. Neighborhood compatibility.
2. Completion time.
3. Impact to Existing Improvements (i.e.: road widening).
4. Right-of-way acquisition.
5. Cost.
6. Network Connectivity
7. Environmental impacts (i.e.: wetlands, potential underground hazards).
8. Ease of design.

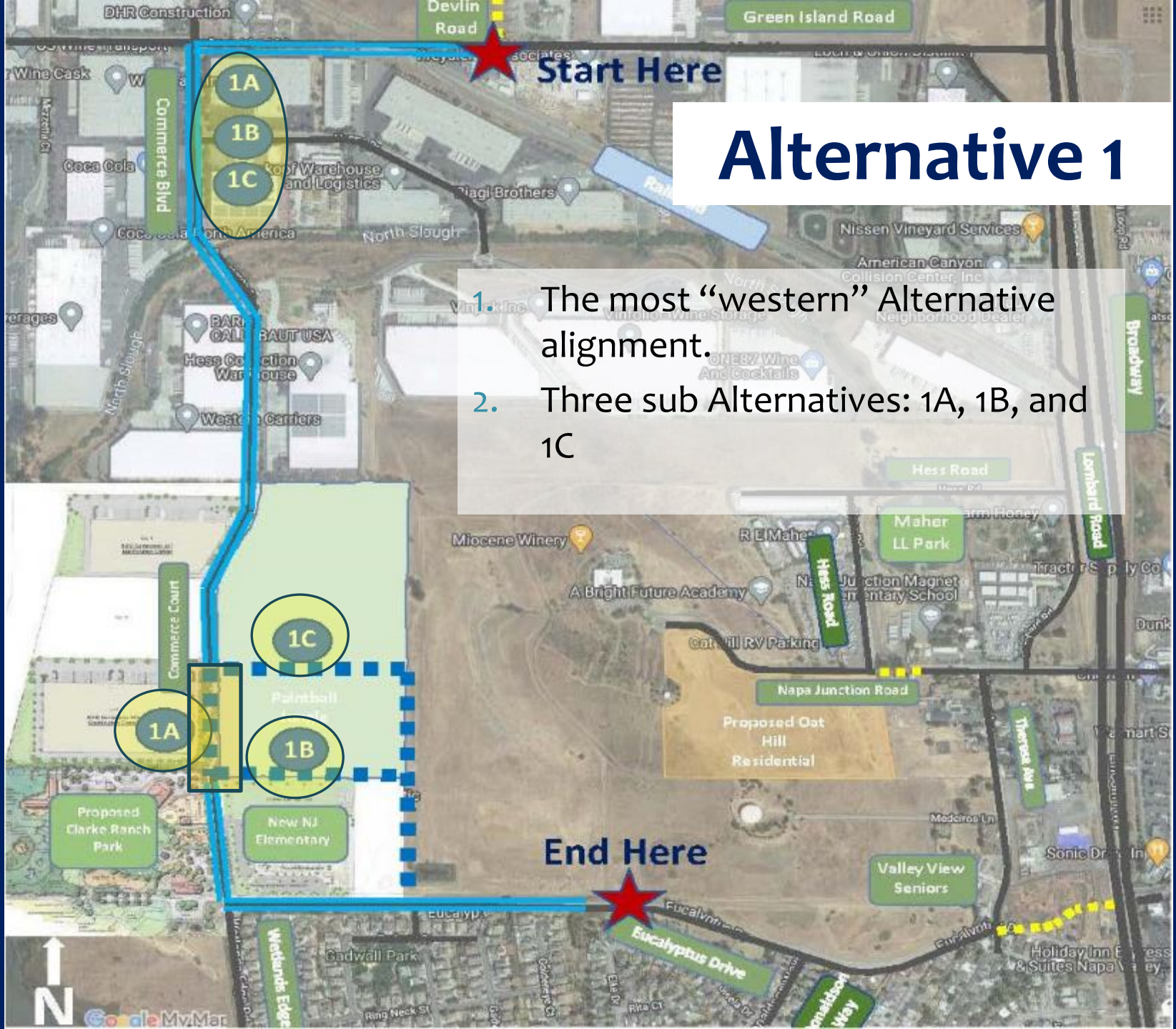
All Alternatives

1. Start at Devlin/GI Road
2. End Mid-Point Eucalyptus Drive
3. New roads are blue dashed line.
4. New GP roads are yellow dashed line.
5. All Alt's avoid creating a new RR Xing.
6. Bike network will "catch up" with rest of GP update



Alternative 1

1. The most “western” Alternative alignment.
2. Three sub Alternatives: 1A, 1B, and 1C



Alternative 1A

1. West on Green Island Road.
2. South on Commerce past cul-de-sac to Eucalyptus Drive.
3. East on Eucalyptus Drive

0.7 Miles

End Here

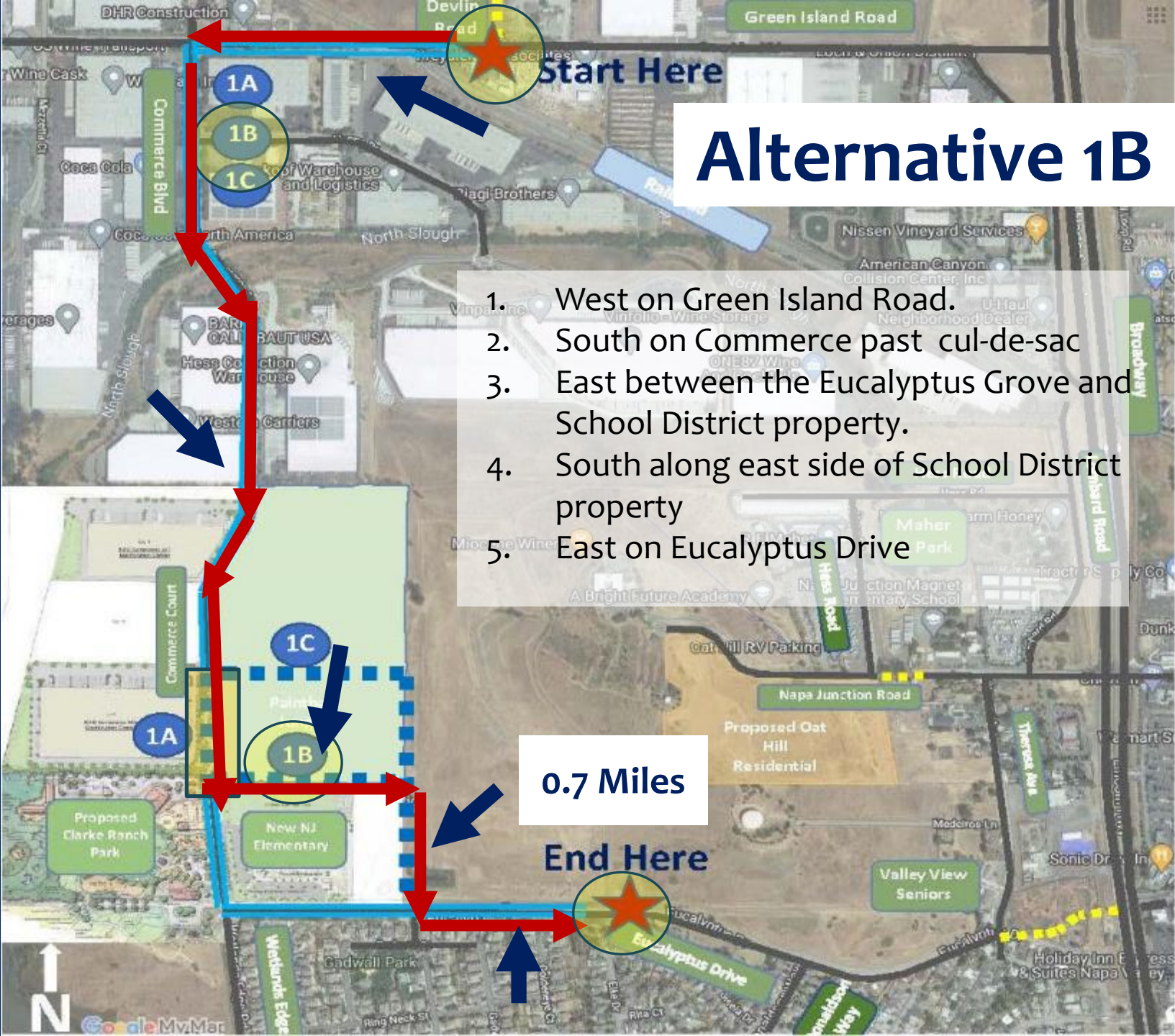


Alternative 1B

1. West on Green Island Road.
2. South on Commerce past cul-de-sac
3. East between the Eucalyptus Grove and School District property.
4. South along east side of School District property
5. East on Eucalyptus Drive

0.7 Miles

End Here



Alternative 1C

1. West on Green Island Road.
2. South on Commerce to cul-de-sac
3. East through the Eucalyptus Grove.
4. South along east side of Eucalyptus Grove and School District property
5. East on Eucalyptus Drive

0.7 Miles



Alternative 2

1. Similar to Alt 1, but avoids Commerce Ct and Wetlands Edge Ct.
2. Alt 2A impacts a “wetland” feature near Eucalyptus Drive.
3. Alt 2B path endpoint path near Eucalyptus Drive is most similar to Existing General Plan.



Alternative 2A

1. West on Green Island Road.
2. South on Commerce to the north edge of the Eucalyptus Grove.
3. East along the north side of the Eucalyptus Grove.
4. South along the east side of the Eucalyptus Grove.
5. East on Eucalyptus Drive

0.6 Miles



Alternative 2B

1. West on Green Island Road.
2. South on Commerce to the north edge of the Eucalyptus Grove.
3. East along the north side of the Eucalyptus Grove.
4. South along the east side of the Eucalyptus Grove to the northern edge of the School District Property
5. Southeast to Eucalyptus Drive

0.6 Miles

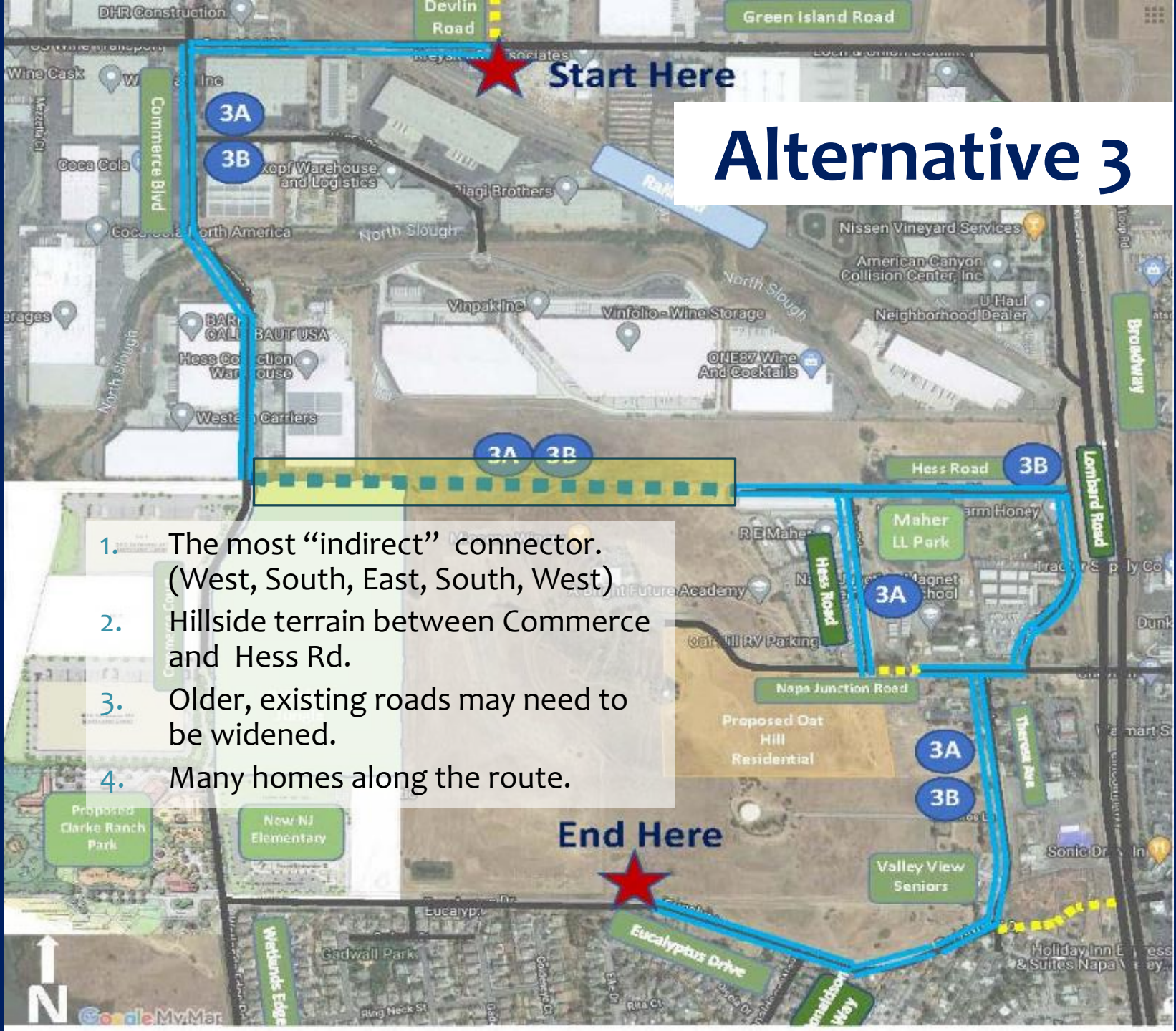


Alternative 3

1. The most “indirect” connector. (West, South, East, South, West)
2. Hillside terrain between Commerce and Hess Rd.
3. Older, existing roads may need to be widened.
4. Many homes along the route.

End Here

Start Here



Alternative 3A



1. East on Green Island Road.
2. South on Commerce to north side of Eucalyptus Grove
3. East from Commerce to Hess Road
4. South on Hess Road
5. East on Napa Junction Road
6. South on Theresa Avenue
7. West on Eucalyptus Drive

1.2 Miles

End Here

Start Here



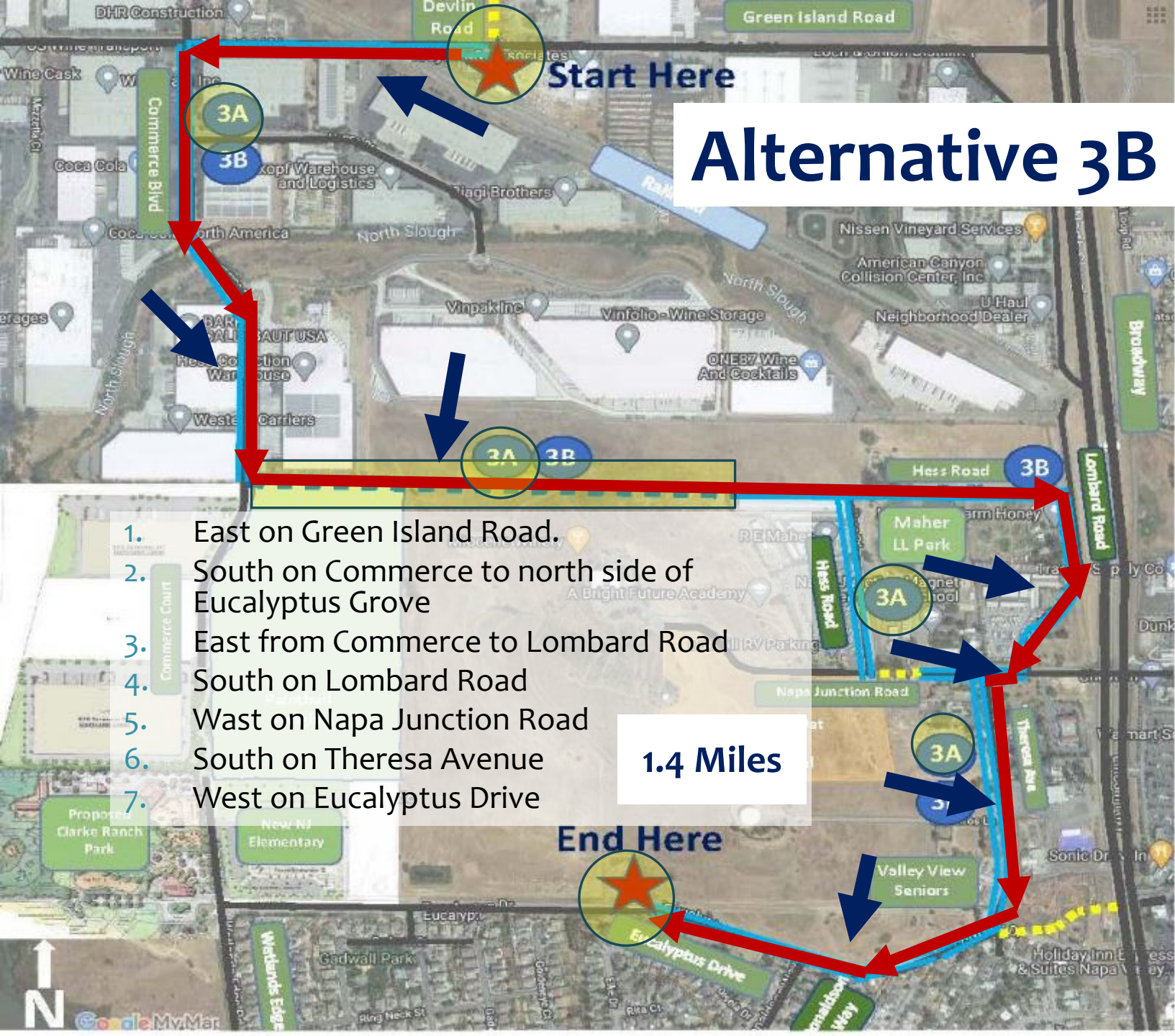
Alternative 3B

1. East on Green Island Road.
2. South on Commerce to north side of Eucalyptus Grove
3. East from Commerce to Lombard Road
4. South on Lombard Road
5. West on Napa Junction Road
6. South on Theresa Avenue
7. West on Eucalyptus Drive

1.4 Miles

Start Here

End Here



Alternative Scoresheet

- Alternative 2A Scores #1
- Alternative 3B Scores the lowest
- The criteria was weighted. Higher criteria rank indicates greater importance.
- Lowest weighted score “wins”

Criteria	Cost	Design	ROW	Environmental	Network Connectivity	Completion Date	Neighborhood Compatibility	Impact to Existing Improvements	Natural Score	Weighted Score	Numerical Rank
Criteria Rank	4	1	5	2	3	7	8	6			
Alt 1A	1	4	1	1	1	1	7	6	22	26.00	4
Alt 1B	2	4	2	5	2	2	2	6	25	23.11	2
Alt 1C	3	1	4	7	2	3	2	3	25	24.00	3
Alt 2A	4	1	2	5	2	3	2	3	22	21.78	1
Alt 2B	5	3	5	2	5	3	1	2	26	24.00	3
Alt 3A	6	6	6	3	6	4	5	7	43	43.11	5
Alt 3B	6	6	7	3	6	4	5	7	44	44.22	6

Alternative 2A

Start Here

End Here



2A

2B

2A



Alternative Scoresheet

- Alternative 2A Scores #1
- Alternatives 3A and 3B Score the lowest
- The criteria was weighted. Higher criteria rank indicates greater importance.
- Lowest weighted score “wins”

Criteria	Cost	Design	ROW	Environmental	Network Connectivity	Completion Date	Neighborhood Compatibility	Impact to Existing Improvements	Natural Score	Weighted Score	Numerical Rank
Criteria Rank	4	1	5	2	3	7	8	6			
Alt 1A	1	4	1	1	1	1	7	6	22	26.00	4
Alt 1B	2	4	2	5	2	2	2	6	25	23.11	2
Alt 1C	3	1	4	7	2	3	2	3	25	24.00	3
Alt 2A	4	1	2	5	2	3	2	3	22	21.78	1
Alt 2B	5	3	5	2	5	3	1	2	26	24.00	3
Alt 3A	6	6	6	3	6	4	5	7	43	43.11	5
Alt 3B	6	6	7	3	6	4	5	7	44	44.22	6

Alternative 3B

Start Here

End Here



Alternative Scoresheet

- Alternative 2A Scores #1
- Alternative 3B Scores the lowest
- The criteria was weighted. Higher criteria rank indicates greater importance.
- Lowest weighted score “wins”

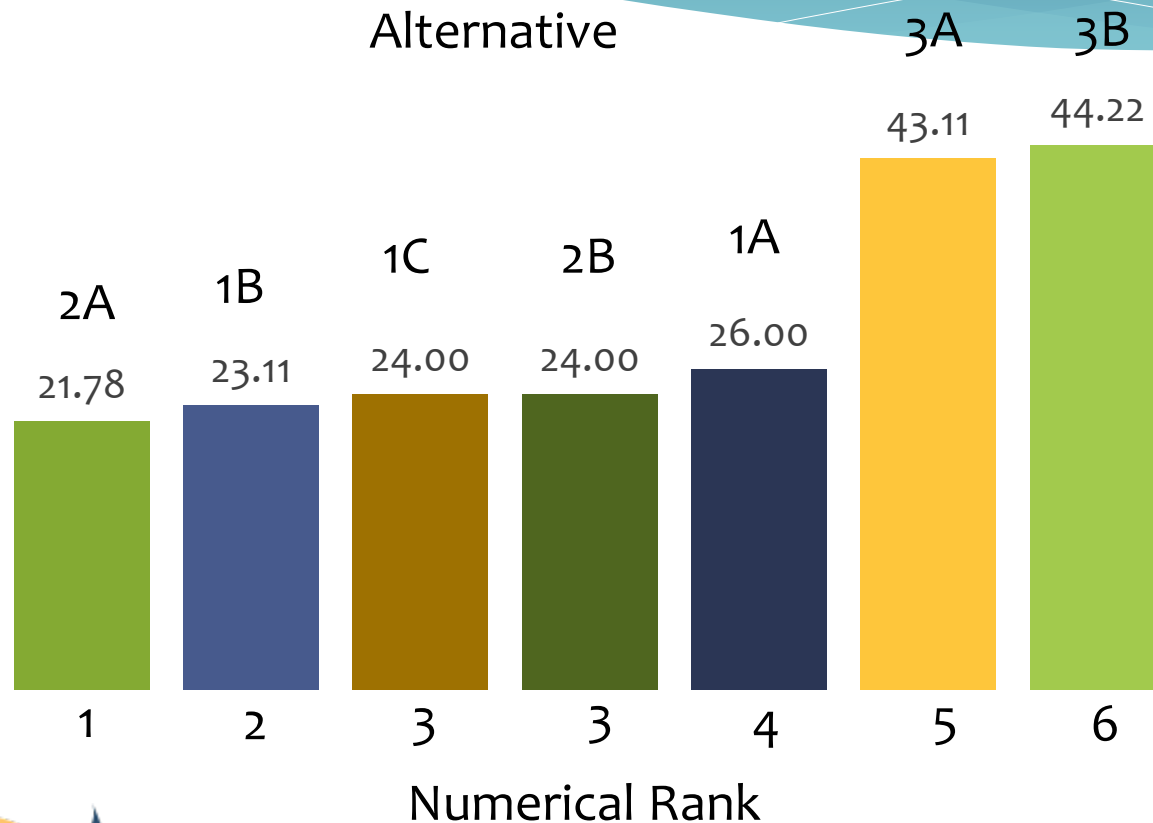
Criteria	Cost	Design	ROW	Environmental	Network Connectivity	Completion Date	Neighborhood Compatibility	Impact to Existing Improvements	Natural Score	Weighted Score	Numerical Rank
Criteria Rank	4	1	5	2	3	7	8	6			
Alt 1A	1	4	1	1	1	1	7	6	22	26.00	4
Alt 1B	2	4	2	5	2	2	2	6	25	23.11	2
Alt 1C	3	1	4	7	2	3	2	3	25	24.00	3
Alt 2A	4	1	2	5	2	3	2	3	22	21.78	1
Alt 2B	5	3	5	2	5	3	1	2	26	24.00	3
Alt 3A	6	6	6	3	6	4	5	7	43	43.11	5
Alt 3B	6	6	7	3	6	4	5	7	44	44.22	6

Alternative Scoresheet

- Alternative 2A Scores #1
- Alternative 3B Scores the lowest
- The criteria was weighted. Higher criteria rank indicates greater importance.
- Lowest weighted score “wins”

Criteria	Cost	Design	ROW	Environmental	Network Connectivity	Completion Date	Neighborhood Compatibility	Impact to Existing Improvements	Natural Score	Weighted Score	Numerical Rank
Criteria Rank	4	1	5	2	3	7	8	6			
Alt 1A	1	4	1	1	1	1	7	6	22	26.00	4
Alt 1B	2	4	2	5	2	2	2	6	25	23.11	2
Alt 1C	3	1	4	7	2	3	2	3	25	24.00	3
Alt 2A	4	1	2	5	2	3	2	3	22	21.78	1
Alt 2B	5	3	5	2	5	3	1	2	26	24.00	3
Alt 3A	6	6	6	3	6	4	5	7	43	43.11	5
Alt 3B	6	6	7	3	6	4	5	7	44	44.22	6

Alternative Comparisons



Committee Q&A

Thank You!



Staff Contact

Brent Cooper, AICP

Community Development Director

bcooper@cityofamericancanyon.org

(707) 647-4335

Erica Ahmann Smithies

Public Works Director

esmithies@cityofamericancanyon.org

(707) 647-4366

