

TRAIL ETIQUETTE

1. Participants must stay on the trail throughout the duration of this course to avoid impact to habitat and wildlife.
2. Newell Open Space Preserve is a working ranch where free-range cattle roam as they please. There are several cattle gates across trails, please leave the gates as you find them, ie. if found open, please leave open; if closed, please close behind you.
3. For your pet's safety, **dogs are not allowed** at this time.
4. Please leave no trace - pack in and pack out trash.
5. Maintain a safe distance from cattle and wildlife, and be aware that this is tick, coyote, mountain lion, and potentially rattlesnake country.



ORIENTEERING

What is orienteering?

Orienteering is a fun sport where the competitors use their navigational skills with a map and compass, to locate a series of waypoints shown on a specialized topographic map.

What is the purpose of orienteering?

The goal of orienteering is to find all the waypoints in the shortest amount of time while staying on designated trails.

How to complete an orienteering course?

With map and compass in hand, participants determine compass bearing and direction of travel and discover number-ordered waypoints identified on the map. Each waypoint, or "control" is a distinct mapped feature such as a trail junction, a boulder, a hilltop, etc. The controls are marked with orange-and-white symbols (above).

**PARTICIPANTS MUST STAY ON TRAIL
THROUGHOUT THE DURATION OF THIS COURSE
TO AVOID IMPACTS TO HABITAT AND WILDLIFE.**

Maps are available at
www.cityofamericancanyon.org/newellopenspace



The City of American Canyon would like to recognize Aditya Sriram for his hard work and dedication in creating American Canyon's very own permanent orienteering course to earn his Eagle Scout badge!



NEWELL OPEN SPACE

Orienteering Course

WELCOME TO NEWELL OPEN SPACE PRESERVE

Address: 7000 Newell Drive, American Canyon
Preserve Hours: Daily, sunrise - sunset.
Loop Trail Access: Weather permitting.

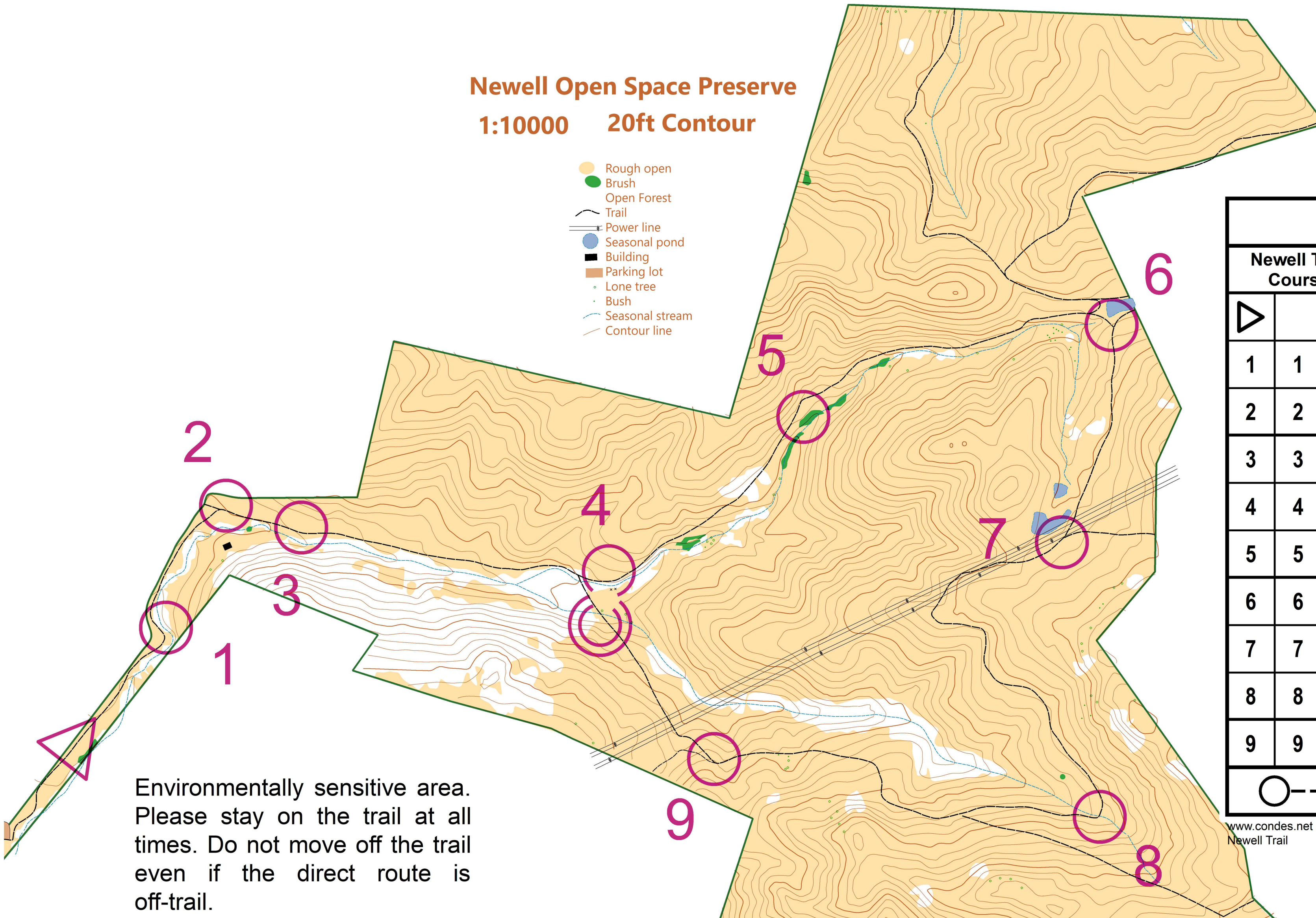


www.cityofamericancanyon.org

American Canyon Police: (707) 253-4451
Maintenance/Information: (707) 647-7275
 For emergencies, call 911

Newell Open Space Preserve 1:10000 20ft Contour

- Rough open
- Brush
- Open Forest
- Trail
- Power line
- Seasonal pond
- Building
- Parking lot
- Lone tree
- Bush
- Seasonal stream
- Contour line



Environmentally sensitive area.
 Please stay on the trail at all
 times. Do not move off the trail
 even if the direct route is
 off-trail.

Newell Trail		
Newell Trail Course	12.0 km	
		Start
1	1	
2	2	Gate
3	3	
4	4	
5	5	Beyond Eucalyptus
6	6	Do not enter the mitigation ponds
7	7	
8	8	
9	9	
----- 900 m ----->		

www.condes.net 9.6.1 BAOC
 Newell Trail